

APPLICATIONS

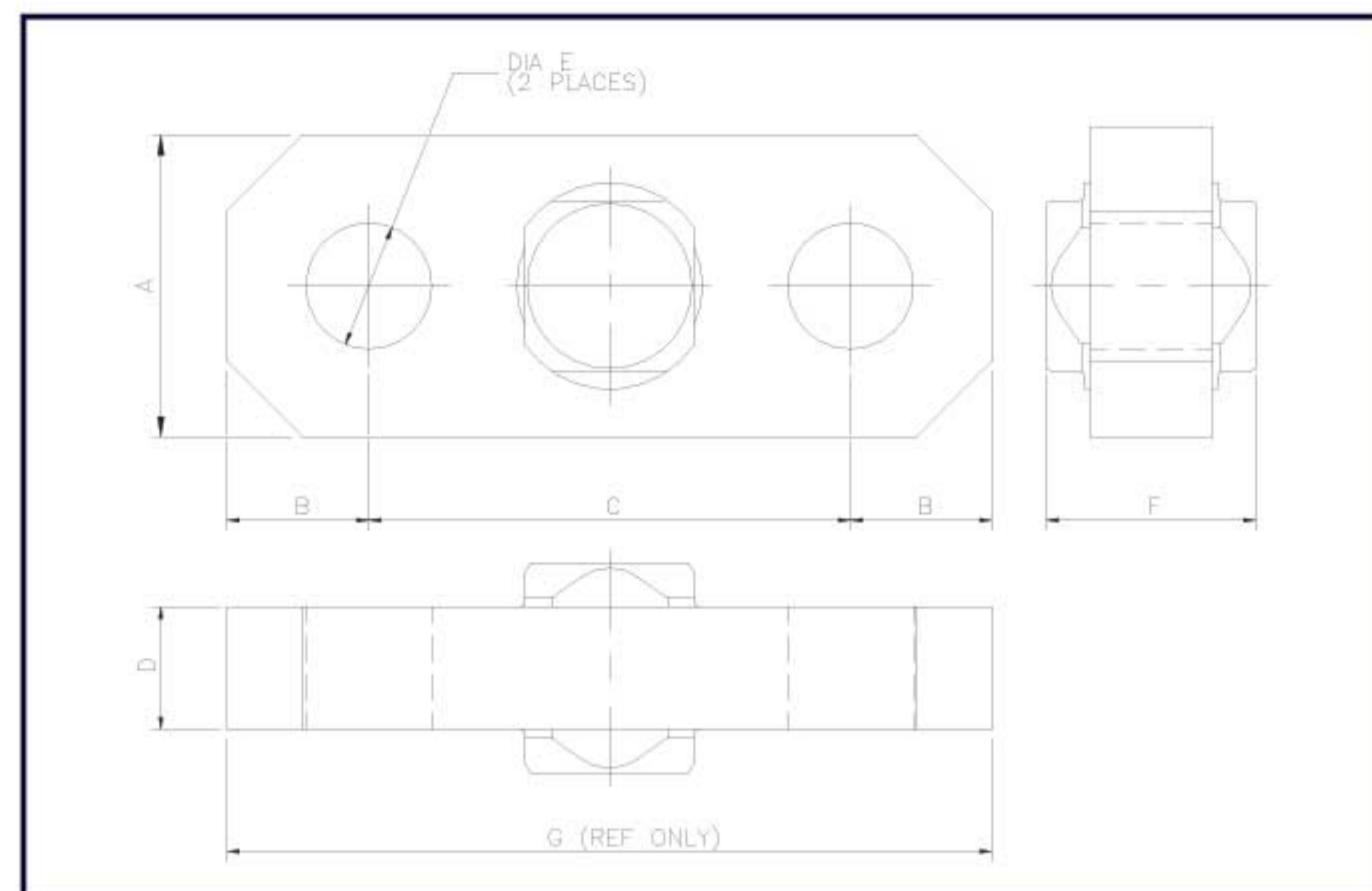
Under-Hook Weighing
 Mobile and Tower Cranes
 Check Weighing
 Tension Measurement
 Construction Operations
 Proof Testing

FEATURES

Quick & Portable Wireless Load Measurement.
 High strength, lightweight aluminium body for ease of transportation and installation.
 Standard Sizes: 2, 6.5, 12, 25, 35, 55, 85, 120, 150 metric tons.

Safety Factor: 700% WLL
Battery Life: 70 hours
Battery Type—Link: 2 x AA/LR6
Battery Type—Display: 4 x AA/LR6
Radio Frequency: 2.4GHz
Proof Load: 200% WLL
 150% for 35T WLL and above
Operating Temperature: -10°C to +40°C
Accuracy: ±1% of actual reading
Range: 100m under normal conditions
Weatherproofed to: IP65

“Power on” system test
 Illuminated 15mm digits
 Push Button Tare
 Peak Hold
 Push button Unit Conversion (T,kg,lb,Ti,Ts)



Load capacity (tonnes)	A	B	C	D	ØE	F	G
2	100	47	166	34	28	74	260
6.5	100	47	166	34	28	74	260
12	100	58	176	40	37	80	292
25	125	75	220	55	53	95	370
55	150	108	254	85	73	125	470
120	220	160	320	115	98	155	640

All dimensions in millimeters (unless otherwise stated)

Load Capacity (tonnes)	Link Weight (Approx)	Shackle Crosby G2130 WLL	Shackle Crosby G2130 Size
2	2.5kg	6.5T	7/8"
6.5	2.5Kg	6.5T	7/8"
12	6.5Kg	12.0T	1 1/4"
25	7.0Kg	25.0T	1 3/4"
55	14.5Kg	55.0T	2 1/2"
120	40.0Kg	120.0T	3 1/2"

Link Material - Aluminium Alloy



For further information visit:
www.safe-t-weigh.com

SUPPLIED BY

PH: (08) 9437 2312
 sales@liftinggearhire.com.au
www.liftinggearhire.com.au

With a policy of continuous improvement, the above specification is subject to alteration.
 Please confirm any critical factor prior to order. Calibration traceable to U.K. National Standards

